

IMSAview

Installation

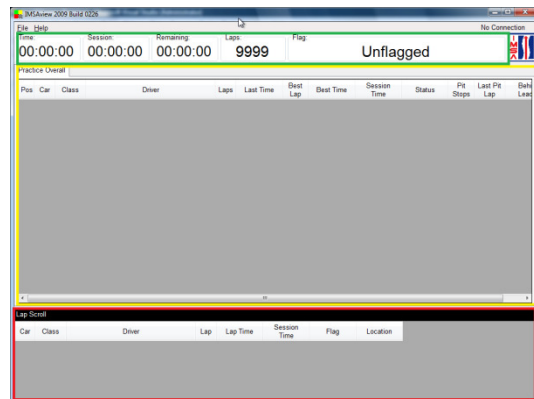
Installation of IMSAview is done through a setup program. The setup program can be downloaded at <http://www.imsatiming.com/software/imsaview> or when connected to the pit lane network, at <http://192.168.13.13/software/imsaview>. The installation will install an IMSAview shortcut in the “Start | Programs | IMSA” area and on the desktop.

Starting the Program

Starting IMSAview can be accomplished by clicking on the desktop icon or the shortcut in “Start | Program Files | IMSA”.

General Layout

- The IMSAview form may be resized in the same way as all Windows applications. In addition the different areas may be resized by clicking and dragging the bar separating them. When the cursor is placed on the edge of an area that can be resized it will change to a up/down arrow symbol or a left/right arrow symbol.
- Time bar (green area) contains
 - “Time:” - Time of Day
 - “Session:” – Elapsed Session Time
 - “Remaining:” – Remaining time in this session.
 - “Laps:” – Remaining Laps in this session (9999 is a timed session)
 - “Flag:” – Current track condition
- Results area (yellow area) shows the current results for the session. Columns can be resized by dragging the vertical bar to the right of the column name to the desired size. Columns may also be reordered by clicking on the column header and dragging the column to the desired location. Right clicking in this area gives the option to change the font and size used.
 - The first tab on the left is labeled “Practice Overall” or “Race Overall” and will show the position of the entire field. If there are multiple classes, additional tabs will be created - one for each class. Clicking on any of these tabs will display only competitors in that class.

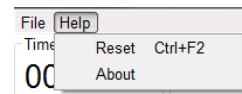
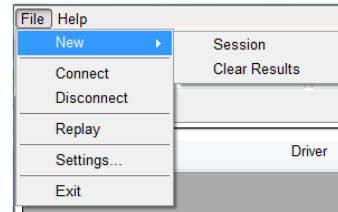


Lap Scroll area (red area) shows every passing at the start/finish for the current session. Columns can be resized by dragging the vertical bar to the right of the column name to the desired size. Columns may also be reordered by clicking on the column header and dragging the column to the desired location. Right clicking in this area give the options to change the font and size as well as an option to stop and start the automatic scrolling with each new start/finish crossing. Menus

IMSAview

The following menu items are contained in IMSAview

- *File*
 - *New*
 - *Session* - prepares for a new session
 - *Clear Results* – clears only the results, keeps the lap information in the lap scroll area.
 - *Connect* – Connect to the live data stream defined on the settings form.
 - *Disconnect* – Disconnect from the live data stream.
 - *Replay* – Replay a recorded data stream file. (see below)
 - *Settings...* - Choose the various options in IMSAview. (see below)
 - *Exit* – Close the program.
- *Help*
 - *Reset* – This option reverts the settings for the form size and the columns order and size back to the defaults.
 - *About* – Shows the version number



Replay

Select the “File | Replay” menu option to replay a file into IMSAview.

After selecting the file, a replay form will appear giving the ability to pause/play, stop, and control the speed of the replay. When the slider control is to the far left the replay speed will be at near real time. Sliding the control to the right will increase the speed 100ms for each tick, or as fast as the computer can process when at the far right.



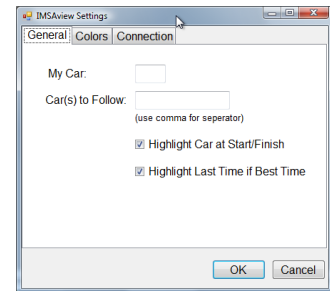
IMSAview

Settings

The settings form allows the customization of settings in IMSAview.

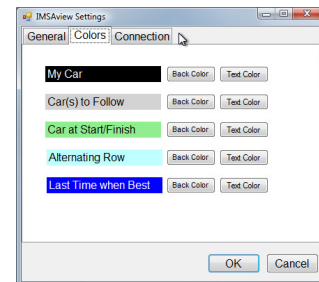
- General

- “My Car:” – Indicate which car number will be highlighted using the “My Car” color scheme.
- “Car(s) to Follow:” – Indicate car numbers to be highlighted using the “Car(s) to Follow” color scheme. When entering multiple cars, use a comma as a separator.
- Checking “Highlight Car at Start/Finish” option will highlight the car number field on the results grid for five seconds using the “Car at Start/Finish” color scheme.
- Checking the “Highlight Last Time if Best Time” option will highlight the Last Time field on the results grid when the last time is equal to the best time using the “Last Time when Best” color scheme.



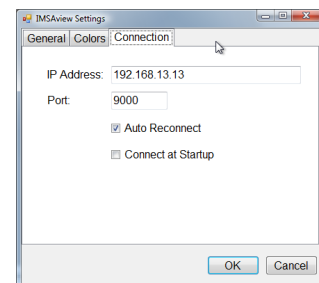
- Colors

- The colors tab of the settings form allows the customization of the various colors in IMSAview. Use the back color and text color button to select the desired color scheme.



- Connection

- “IP Address:” – IP Address of the Enhanced RMon data stream. The address should remain 192.168.13.13 unless told otherwise.
- “Port:” – Port number of the Enhanced RMon data stream. The port number should remain 9000 unless told otherwise.
- Checking “Auto Reconnect” automatically tries to reconnect in the event of a hardware failure or network disconnection. The reconnection is attempted once a second until there is a connection.
- Checking “Connect at Startup” will automatically connect to the live data stream when IMSAview is started.



IMSAview

Notes:

- When starting or restarting in the middle of a session:
 - Lap Scroll grid will not contain previous start/finish crossings. Only crossings from the start of IMSAview will be shown. This information is not repeated in the data stream.
 - Number of pit stops and the last pit lap number are not repeated in the data stream, so they will only be current as of the start of IMSAview.